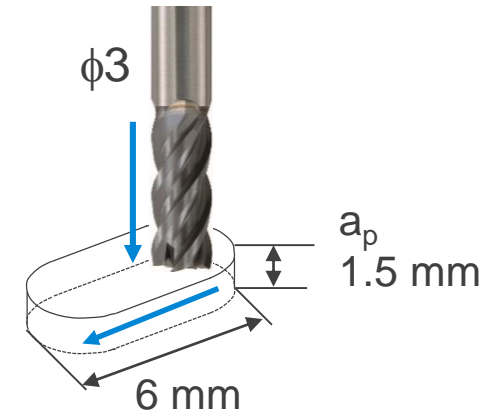


CZS slit milling example

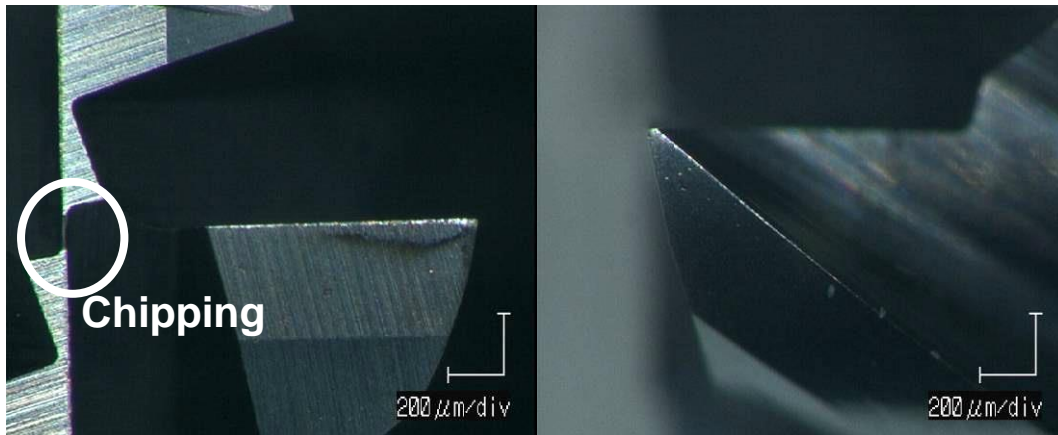
Tool : **CZS 4030-0800** ($\phi 3 \times 8$)
Work material : Copper C1100
Size : Width 3 x Length 6 x Depth 1.5 mm
No. of slit : 1,600 slit
Coolant : Water soluble

Milling condition

Spindle Speed (min^{-1})	Z-Feed Rate (mm/min)	XY-Feed Rate (mm/min)	a_p (mm)	Cycle Time
8,500	250	600	1.5	50 min



Tool after process



Workpiece after process



**Although 1,600 slits were milled, the tool wear were small.
Only the small chipping was in the center of bottom edge.
There is no burr on the workpiece.**